



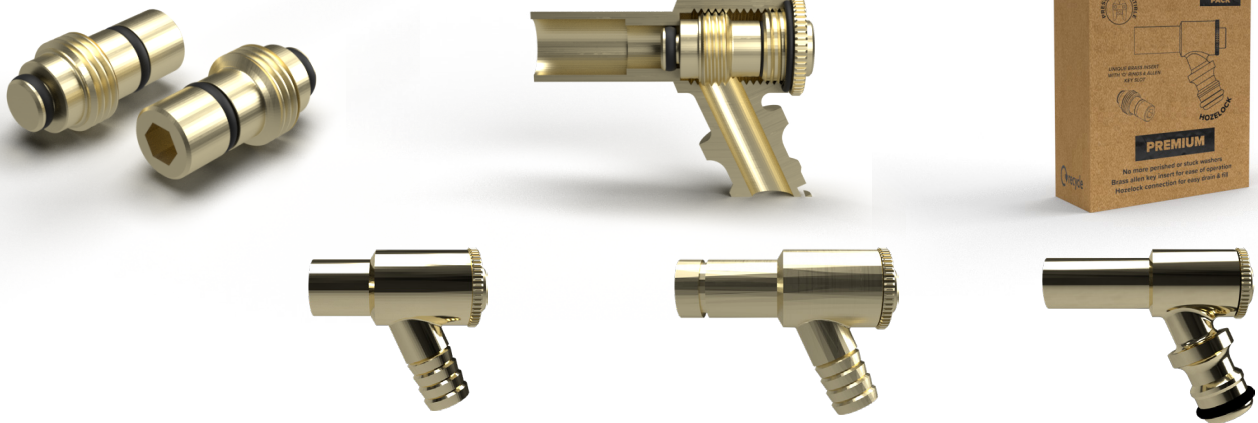
Product Range:
T-DOC Drain-off Cock

Product Overview

Introducing the new drain-off cock. T-DOC features an innovatively engineered, solid brass insert and an upgraded O-ring seal. With this improved design, concerns of stuck or deteriorated washers are effectively eliminated. The robust, solid brass insert and O-ring seat provides a secure closure for the drain-off, ensuring leak-free performance and preventing any instances of washer obstruction. These advancements optimise the T-DOC's ability to facilitate effortless drainage and superior sealing, delivering unparalleled convenience and peace of mind.

Features & Benefits

- No more perished & stuck washers
- 3 different versions available; Standard, Long Tail and Premium (includes Hozelock connection)
- Solid/dependable brass & O-ring construction
- Uses a 6mm hex key to operate
- Press-fit compatible (Long Tail and Premium)
- Sold in packs of 5 (fully recyclable retail packaging)
- Drain and fill with T-DOC Premium



Specifications:

	Standard	Long Tail	Premium
Code	TDOCS	TDOCL	TDOCP
Pack QTY	5pcs	5pcs	5pcs
Press-fit Compatible	No	Yes	Yes
Push-fit Compatible	No	Yes	No
Hozelock Connection	No	No	Yes
Max. Pressure	10bar	10bar	10bar
Max. Temperature	95°C	95°C	95°C
neXgen Insert Hex (6mm)	Max. 4 N m	Max. 4 N m	Max. 4 N m
Tail Length	15mm	30mm	25mm
Tail Diameter	15mm	15mm	15mm

***IMPORTANT - T-DOC inserts can only be used on T-DOC Drain-off Valves. Please remove the insert before any hot works. Tesla UK Ltd will not be held liable for any misuse of our products.**